



Ver 5 2017-06-01

# Swedish ORCi Championship (Svenskt mästerskap enligt ORCi)

June 1–4 2017

## Sailing Instructions

---

### 1 Organizing Authority

The Swedish ORCi Championship is organized by the Oxelösunds Segelsällskap (OXSS) in conjunction with Svenska Havskappseglingförbundet (SHF) under the authority of Swedish Sailing Federation (SSF) and under the overall authority of the Offshore Racing Congress (ORC) and the World Sailing (WS).

### 2 Rules

- 2.1 The regatta will be governed by the rules as defined in The Racing Rules of Sailing (RRS).
- 2.2 The following rules will also apply:
  - a) IMS Rule
  - b) ORC Rating Systems Rule
  - c) ORC Class Rules for ORC Classes
  - d) World Sailing Offshore Special Regulations  
(except for Sportboats, all races will be Category 3 (without the liferaft aboard – to be decided by the OA and ORC). For Sportboats, ORC Sportboat Class Rules will apply).
- 2.3 No national authority prescription will apply.
- 2.4 Under RRS 87, ORC Rule 206 is changed as follows:
  - a) All sails shall have been measured and stamped by an ORC measurer. During the pre-race equipment inspection, sails will be marked for the event by stamp, sticker and/or inspector's signature.
  - b) The maximum number of sails shall be as defined in ORC Rule 206 with one additional mainsail allowed. The second mainsail shall have a minimum of one set of reef points. The mainsails may be interchangeable.
  - c) With the exception of the second mainsail all sails shall be aboard while racing.
  - d) Sails damaged during the series may be repaired. Sails beyond repair may be replaced with permission of the Technical Committee
- 2.5 If there is a conflict between languages the English text will take precedence.
- 2.6 Part 2 of the Racing Rules of Sailing is replaced by Part B of the International Regulations for Preventing Collisions at Sea from 22:30 to 03:30 local time.
- 2.7 Appendix 1 of these SI shall apply for the bow numbers. Protests on the bow numbers can be lodged only by the Race Committee. This changes RRS 60.1 and 60.3.

### 3 Classes

Boats will be in one start.

## **4 Notices to competitors**

Notices to competitors will be posted on the official notice board(s) located at OXSS race office. Notices will also be posted on the event website. Failure or delay to post the notice on the event website will not be ground for request for redress by the boat. This changes RRS 60.1(b).

## **5 Changes to Sailing Instructions**

Any change to the Sailing Instructions will be posted not later than 2017-06-01 at 16.00 before it will take effect, except that any change to the schedule of races will be posted by 18.00 on the day before it will take effect.

## **6 Signals made ashore**

6.1 Signals made ashore will be displayed at outside OXSS race office.

6.2 When flag AP is displayed ashore '1 minute' is replaced with 'not less than 120 minutes' in race signal AP. This changes race signal AP.

## **7 Schedule of races**

7.1 Times of the first warning signals are defined as follows:

June 1 – 19:55 offshore race

June 3 – 09:55 inshore race

June 4 – 09:55 inshore race

The Organizing Authority and/or the Race Committee reserves the right to modify the above programme according to weather conditions and/or other unforeseen reasons.

7.2 Eight races are scheduled including:

- two offshore races using the same starting line. The first race will be from the start to a control point approximately mid-course, and the second race will be from the start to the finish.
- six inshore races

7.3 On the last day of regatta no warning signal will be given after 18:00 unless it follows signal of general recall or postponement (Flag AP) of a race whose first warning signal had been made before 18:30.

## **8 Class flag**

The Class flag will be E.

## **9 The Start**

9.1 A boat starting later than 15 minutes in the inshore races and 15 minutes in the offshore race after her start signal will be scored DNS. This changes RRS A4.1.

9.2 After signalling an individual recall, the race committee will attempt to broadcast the sail number, bow number or name of boat that has not started and is identified as OCS on VHF channel 06 Delay in the radio broadcast of these calls, or the order in which they are made, or any omission or failure in the emission or reception of these, will not be grounds for a request for redress by the boat. This changes RRS 60.1(b).

## 10 Penalty system

- 10.1 The penalty for breaking a rule of Part 2 while outside a Zone will be One-Turn penalty – one tack and one gybe. This changes RRS 44.1.
- 10.2 For the offshore race, RRS 28 is changed as follows:
- (a) In rule 28.1, delete the first sentence and replace with:  
'A boat shall cross the starting line after having been entirely on the pre-start side at or after her starting signal and sail the course described in the sailing instructions and *finish*.'
  - (b) In rule 28.2, delete the first sentence and replace with:  
'A string representing a boat's track from the time she begins to approach the starting line from its pre-start side to cross it until she *finishes* shall, when drawn taut, ...'
  - (c) Add new rule 28.3 Penalty:  
A boat that does not cross the starting line as required by rule 28.1 will receive the 20% scoring penalty as defined in RRS 44.3. This changes RRS A4 and A5. The scoring penalty shall be divided equally between offshore race 1 and offshore race 2, if offshore race 2 is completed.
- 10.4 The penalty points assigned in accordance with RRS A4.2 in an offshore race shall be applied only to offshore race 1 if a breach occurs before the mid-course control point and only to offshore race 2 if a breach occurs between the finishing lines of offshore race 1 and offshore race 2.
- 10.5 A measurement penalty shall apply fully to both offshore races.
- 10.6 For minor breaches of the Offshore Special Regulations, RRS 55 and any Sailing Instruction marked with the jury may impose any penalty different from Disqualification, or not impose a penalty, at its discretion. Maximum discretionary penalty for the minor infringements of the Offshore Special Regulations will be the scoring penalty of 10% calculated as in RRS 44.3(c).

## 11 Protests and requests for redress

- 11.1 In addition to complying with RRS 61, a protesting boat shall inform the Race Committee of her intention to protest and the identity of the protested boat(s) as soon as possible after finishing or retiring.
- 11.2 Protest forms are available at the race office. Protest shall be delivered there within the time limit which shall be:
- a) for inshore races: 2 hours after the last boat has finished the last race of day. The same time limit applies to protests by the race committee and international jury about incidents they observe in the racing area and to requests for redress (except as permitted in c) below). This changes RRS 61.3 and 62.2.
  - b) for offshore race(s): 1 hour after protestor's finish. If a boat finishes by night, a protest can be logged from 10:00 until 12:00 the next day.
- 11.3 Measurement protest by the boat shall not be accepted after 2017-06-03 at 18:00. This changes RRS 60.1(a) and 61.3.
- 11.4 Notice of protests by the Race Committee or the International Jury will be posted on the official notice board to inform competitors under RRS 61.1(b).
- 11.5 Notices to inform competitors of hearings in which they are parties or named as witnesses will be posted:
- a) for windward/leeward races within 30 minutes of the protest time limit
  - b) for the offshore race, within 30 minutes of the finish of all the boats involved in the protest, except that Protest notices will not be posted 2017-06-01 at 18:00 until 2017-06-02 at 06:00
- 11.6 On the last day of the regatta a request for reopening a hearing or request for redress for a jury decision shall be delivered:
- a) within the protest time limit if the party requesting reopening was informed of the decision on the previous day

b) no later than 30 minutes after the party requesting reopening was informed of the decision on that day

This changes RRS 62.2 and 66.

11.7 When RRS N1.4(b) is applied the time limit will be 30 minutes after the decision is given.

## **12 Scoring**

12.1 Windward/leeward race results will be determined by corrected times calculated by Performance Curve Scoring for Windward/Leeward.

12.2 Offshore race results will be determined by corrected times calculated by Performance Curve Scoring Circular Random or Performance Curve Scoring Ocean for PCS.  
The Low Point Scoring System of RRS Appendix A will apply. The Offshore race will hold a 50% higher scoring weight.

12.3 The decision on the scoring method and scoring parameters used will be at the sole discretion of the Race Committee and together with length of course, directions of leg and the wind speed will not be grounds for request for redress by the boat. This changes RRS 60.1(b).

12.4 The championship is valid if at least 3 inshore races and 1 offshore race or at least 3 inshore races and 2 offshore races are completed. One discard will be allowed if 5 races are completed, but if there is only one offshore race completed in the series it shall not be discarded.

## **13 Safety regulations**

13.1 Boats retiring for any reason in any race shall report to the Race Committee as soon as possible.

13.2 Any use of the engine for propulsion purposes for rescuing people, giving help or any other reason shall be reported after arrival in written form to the Race Committee stating reasons for such procedure. If a boat does not gain a significant advantage in the race, the National Jury may impose a discretionary penalty.

## **14 Replacement of crew or equipment**

14.1 The Race Committee may approve crew changes (adding new crew members, replacing or disembarking crew members) by written skipper's request made no later than 2 hour before the scheduled time of the start of the first race of the day. The substituted crew member shall not be aboard on any other competing boat throughout the remainder of the series.

14.2 Substitution of damaged or lost equipment will be not allowed unless approved by the Technical Committee. Requests for substitution shall be made to the Technical Committee at the first reasonable opportunity.

## **15 Equipment and measurement checks**

A boat or equipment may be inspected at any time for compliance with class rules and Sailing Instructions. On the water or after arriving in harbor, a boat may be instructed by the measurer including VHF channel 6 to proceed immediately for inspection.

## **16 Official boats**

16.1 Official boats will display an OXSS- flag. Failure of any official boat to display her flag will not be grounds request for redress by the boat. This changes RRS 60.1(b).

16.2 Vessels used by press, photographers, film crews, VIPs etc. are not under the jurisdiction of the Race Committee. Any action by these boats shall not be ground for request for redress by the boat. This changes RRS 60.1(b).

## **17 Support boats**

Support boats shall be registered at the race office where identification number will be assigned. Identification shall be visible at all times. All support boats shall keep well clear of the starting

area and, after the preparatory signal, are not to approach within 100 meters of any competing boat. A breach of this SI may result with a scoring penalty against the boat connected and/or withdrawal of permission to be in the racing area for one or more days.

## **18 Haul-out restriction**

From 09:00 on 2017-06-01 yachts shall not be hauled out except for the purposes of repairing damage; and only after written permission from the Jury. While hauled for this purpose, cleaning and polishing of the hull below the waterline will not be permitted. Appendages shall not be removed from the boat during the series.

## **19 Communication**

19.1 Radio communication with Race Committee during the regatta will be on VHF channel 06 The Race Committee may give verbal confirmation of any race signal over VHF Channel 06. Failure to make a broadcast or to time it accurately will not be grounds for request for redress by the boat. This changes RRS 60.1(b).

19.2 Except when communicating with the Race Committee, a boat while racing, shall not transmit or receive communication of any information not publicly available to all boats participating. This changes RRS 41.

## **20 Trophies and prizes**

Daily first prize

Five prizes

## **21 Disclaimer of liability**

Competitors participate in the regatta entirely at their own risk, see RRS 4 - Decision to Race. The Organizing Authority, Oxelösunds Segelsällskap (OXSS), Svenska Havskappseglingförbundet (SHF), ORC and any other party involved in the organization of the regatta will not accept any liability for material damage or personal injury or death sustained in conjunction with or prior to, during, or after the regatta. Each boat owner or his representative accepts these terms by signing the entry form.

## **Part 2 - Inshore course**

Courses designed to provide durations of 1 to 1.5 hours

### **23 The course**

23.1 The diagram in Attachment 1 shows the course, including the approximate angles between legs, the order in which marks are to be passed, and the side on which each mark is to be passed.

23.2 No later than the warning signal, the RC signal boat will display the approximate compass bearing of the first leg.

### **24 Marks**

24.1 Marks in Attachment 1 will be yellow cylinders

24.2 New mark as provided in instruction 25.1 will be orange cylinder.

### **25 Change of the next leg of the course**

To change the next leg of the course, the race committee will lay a new mark and remove the original mark as soon as practicable. A new windward mark will be placed without the offset mark.

### **26 Starting line**

The starting line will be between RC signal boat at the starboard and orange flag at the port-end.

## **27 Finishing line**

The finishing line will be between RC signal boat and orange flag.

## **28 Time limit**

The time limit for the first boat to finish will be 3 hours. Boats failing to finish within 30 minutes after the first boat sails the course and finishes will be scored Did Not Finish. This changes RRS 35 and A4.

## **Part 3 - Offshore course**

### **29 The course**

The course will be: Start – Starting line (pos 31) - First finishing line in Attachment 3  
Second finishing line in Finishing line (pos 32) The offshore race will be scored as two races: the first offshore race will be from the Start in Starting line (pos 31) to the First finish line approximately mid-course in Attachment 3 and the Second offshore race will be from the Start in Starting line (pos 31) to the Second finish line in Finishing line (pos 32)

### **30 Marks**

Marks for the offshore races see Attachment 4.

### **31 Starting line**

The Starting line will be between orange flag at OXSS-Tower at the starboard and yellow cylinder at the port-end. See Attachment 2.

### **32 Finishing line**

32.1 The Finishing line for the first offshore race will be between see Attachment 3, past **W to E.**

32.2 The Finishing line for the second offshore race will be blue flag at OXSS-Tower at the **port-end and yellow cylinder at the starboard.** See Attachment 2.

### **33 Time limit**

33.1 There will be no time limit for the first offshore race.

33.2 The time limit for first boat to finish will be June 2 at 15.00 Boats failing to finish within 3 hours after the first boat sails the course and finishes, shall be scored with the number of points equal to the number of boats that have started and finished within the time limit, plus 1. This changes RRS 35 and A4.

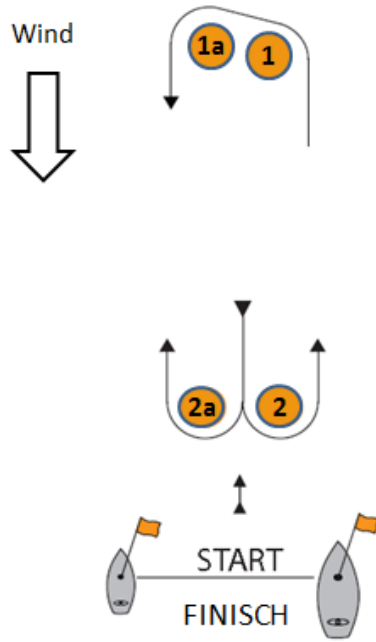
### **34 Finishing by night**

Boats that finish by night shall illuminate their numbers when finishing, and in case of doubt shall try to identify themselves to the RC after finishing.

### **35 Reporting positions**

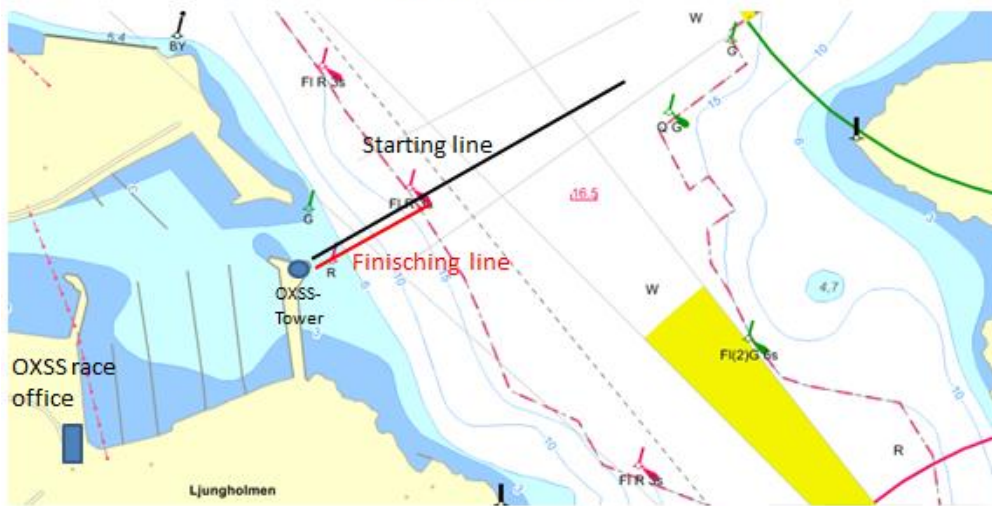
AIS will be used

# Attachment 1



START – 1, 1a, 2/2a, 1, 1a, FINISCH

# Attachment 2



# Attachment 3

